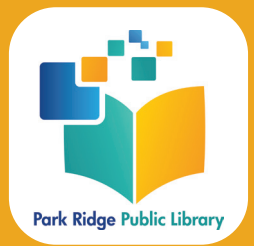


Preschool & Enrichment Fair 2025

**Preschools & Daycare Centers
Enrichment Programs
Parent Resources**



A Mother's Touch Learning Academy

1666 Rand Rd.
Des Plaines, IL 60016
847-813-5039

www.amotherstouch.us

Daycare: Yes

Entrance Requirements: Parent interview, classroom observation, registration fee, other fees (contact school for more details), enrollment application, medical form

Application Date: Open Enrollment



Christie's Carousel of Learning

1300 W. Crescent Ave.
Park Ridge, IL 60068
847-825-4568

www.christiescarousel.com

Daycare: Yes

Entrance Requirements: Registration fee, enrollment application, medical form

Application Date: Open Enrollment

Additional Information: Weekly summer day camp for children ages 2-9, full or part time. Thanksgiving, Christmas and spring programs with theatrical performances



Brickton Montessori School

8622 W. Catalpa Ave.
Chicago, IL 60656
773-714-0646

www.brickton.org

Daycare: Yes

Entrance Requirements: Parent interview, classroom observation, registration fee, enrollment application

Application Date: Open Enrollment

Additional Information: Summer programs for infants, toddlers, and elementary; half to full-day programs



Christian Heritage Academy

315 Waukegan Rd.
Northfield, IL 60093
847-446-5252

christianheritage.org

Cost: August - May (10 months): MWF a.m. \$5500: MWF Full Day \$8100: M - F a.m. \$7500, M - F Full Day \$11,000

Daycare: No

Entrance Requirements: Toilet trained, parent interview, registration fee, enrollment application, medical form

Application Date: Open for 2025-26 school year

Additional Information: Christian Heritage Academy's preschool and Kindergarten programs are intentionally designed to give young learners the best start to lifelong social and academic success, with an emphasis on spiritual development modeled by "Living Curriculum" teachers. Our classroom environments and activities are designed to promote optimal learning and development. Our teachers meet young children where they are developmentally, both as individuals and as part of a group, and help each child meet challenging and achievable goals.



CHRISTIAN HERITAGE
ACADEMY

Children's Campus Center

7250 W. Touhy
Chicago, IL 60631
773-631-3632

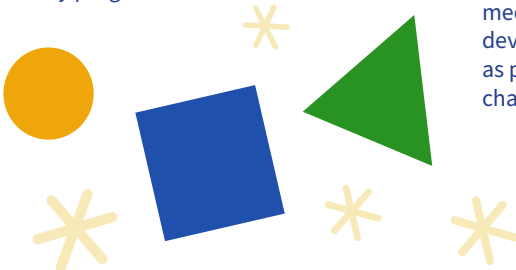
childrenscampuscenter.com

Daycare: Yes

Entrance Requirements: Parent interview, enrollment application, medical form

Application Date: Open Enrollment

Additional Information: Summer programs, half day programs



Daycare Children's World

1006 N. Delphia
Park Ridge, IL 60068
773-759-0608



daycarechildrensworldparkridge.com

Daycare: Yes

Entrance Requirements: Parent interview, registration fee, enrollment application, medical form

Application Date: Open Enrollment

Additional Information: Summer camp, Bilingual Spanish immersion, infant care, part-time option

Everbrook Academy

501 Busse Hwy.
Park Ridge, IL 60068
224-985-2637



www.everbrookacademy.com

Cost: Infants \$612, Toddlers \$562, Twos \$493, Early Preschool \$493, Preschool \$446, Pre-K \$446, Junior Kindergarten \$465

Daycare: Yes

Entrance Requirements: Parent interview, registration fee, enrollment application, medical form, birth certificate

Application Date: Open Enrollment, waitlist until at least Fall 2025

Additional Information: Summer camp, enrichment programs, electives (dance, karate, Spanish, phonics)

Jefferson Early Childhood Center

8200 W. Greendale Ave.
Niles, IL 60714
847-318-5360



www.d64.org/jef

Daycare: No

Entrance Requirements: Registration fee, medical form, proof of residency within D64 boundaries, birth certificate

Application Date: Registration begins January 2025; open enrollment while spaces available

Additional Information: Jefferson Early Childhood Center services children 3-5 yrs of age that reside in Park Ridge-Niles School

District 64. Prior to enrollment, children and families must participate in a developmental screening to determine eligibility for Preschool for All. Eligible children can attend our preschool program at no cost to the family. Jefferson Early Childhood Center offers a half day program, 5 days per week. Preschool classrooms are multi-age with 15 students per class. Each classroom is staffed with a certified early childhood teacher and two teaching assistants. Each classroom also receives support from a speech and language pathologist, occupational therapist, and school social worker. There are multiple opportunities for parent involvement and volunteering throughout the school year.

Immanuel Lutheran Early Childhood Center

1850 Chestnut Ave.
Glenview, IL 60025
847-724-6092



Immanuel Lutheran
Early Childhood Center

immanuelglenview.org/open-arms-home/

Cost: Infants: 5 day \$560, 3 day \$392, 2 day \$308; Toddlers: 5 day \$530, 3 day \$371, 2 day \$291; 2-year-olds: 5 day \$475, 3 day \$332, 2 day \$261; 3 & 4-year-olds: 5 day \$430, 3 day \$300, 2 day \$236; Half day Preschool for 3 & 4-year-olds: 5 day \$258, 3 day \$180, 2 day \$142.

Daycare: Yes

Entrance Requirements: Registration Fee; Enrollment Application; Medical Form; Emergency contact form; Parent handbook

Application Date: Open Enrollment

Additional Information: Summer camp available for Children K-4th grade



Kiddie Academy of Park Ridge

109 S. Washington Ave.
Park Ridge, IL 60068
847-692-5000



kiddieacademy.com

Daycare: Yes

Entrance Requirements: Parent interview, classroom observation, registration fee, enrollment application, medical form

Application Date: Open Enrollment

Additional Information: Gross motor enrichment programs, parent classes, summer program, language enrichment programs and much more!

Maine South Preschool

1111 S. Dee Rd.
Park Ridge, IL 60068
847-825-7711 (ext. 3040)



Cost: 3- and 4-year-olds depending on the high school schedule, 2-4 days/week; mornings; \$300 from mid-September to mid-May

Daycare: No

Entrance Requirements: Toilet trained, enrollment application, medical form

Application Date: We start accepting applications in April.

Additional Information: This is a high school laboratory program. High schoolers plan, prepare and implement lessons and receive a grade and credit for their preschool course.

Mary, Seat of Wisdom School

1352 S. Cumberland Ave.
Park Ridge, IL 60068
847-825-2500



www.mswschool.org

Daycare: No

Entrance Requirements:

Toilet trained, parent interview, registration fee, other fees (contact school for more details), enrollment application, medical form

Application Date: Rolling Acceptances

Additional Information: Summer enrichment camp available

Messiah Lutheran Child Care Center

1605 Vernon Ave.
Park Ridge, IL 60068
847-825-3767



www.messiahchildcare.com

Daycare: Yes

Entrance Requirements: Registration fee, enrollment application, medical form, other fees (contact school for details)

Application Date: Open Enrollment

Additional information: We have a Two Year Classroom, Young Three Year Old Classroom, Three's and Four's Classroom, and Junior Kindergarten Classroom. Summer camp and enrichment classes offered. The Brightwheel App is used for communication.

Parents Day Out at First United Methodist Church of Des Plaines

105 N. Warrington Rd.
Des Plaines, IL 60016
773-255-0518



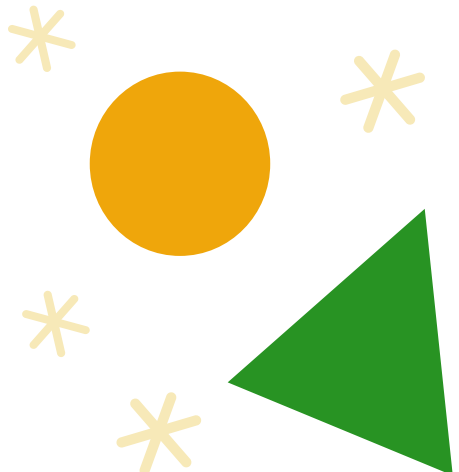
www.fumcdp.org

Daycare: No

Entrance Requirements: Registration fee, enrollment application

Application Date: Open Enrollment

Additional Information: Summer/Winter Vacation Bible School, summer camp.



Oakton College Early Childhood Education Center

7701 N. Lincoln Ave.
Skokie, IL 60077
847-635-1441

www.oakton.edu

Cost: M-F 8:30 a.m. to 3 p.m. \$250/week;
M-F 7 a.m. to 6 p.m. \$305/week;
M/W/F 7 a.m. to 6 p.m. \$225/week; or
T/Th 7 a.m. to 6 p.m. \$150/week

Daycare: Yes

Entrance Requirements: Toilet trained, registration fee, enrollment application, medical form

Application Date: Open Enrollment

Additional Information: Part time and full time summer programs available



music and choir, art, full-size gym for PE and year-round recess. Daily Jesus Time and participation in Advent Service at Christmas. Preschool has a max of 18 students per day and pre-K class has a 20 student per day max. Open House is Sunday, January 26, Noon - 2 p.m. Tour, visit with teachers, and enroll for the 2025 - 2026 school year!

St. Juliana School

7400 W. Touhy Ave.
Chicago, IL 60631
773-631-2256

www.stjuliana.org

Daycare: Yes

Entrance Requirements: Toilet trained, registration fee, enrollment application, medical form

Application Date: Open Enrollment

Additional Information: A wide range of extracurricular programs in athletics, fine arts, and scouting provide students with additional opportunities for growth and exploration



Park Ridge Park District Preschool

2701 W. Sibley St.
Park Ridge, IL 60068
847-685-4400

www.prparks.org

Daycare: No

Entrance Requirements: Toilet trained, medical form, birth certificate, must be appropriate age by September 1, 2025

Application Date: Open registration is March 10, 2025 starting at Noon online/in-person

Additional Information: Summer camp programs, enrichment programs, all day options



St. Paul of the Cross School

140 S. Northwest Hwy.
Park Ridge, IL 60068
847-825-6366

www.spc-school.net

Daycare: No

Entrance Requirements: Toilet trained, registration fee, enrollment application

Application Date: Open Enrollment

Additional Information: Week-long enrichment camps for students beginning in preschool (age 3) offered throughout the summer. Catholic School offering Preschool (age 3) - 8th grade.



St. Andrews Lutheran School

260 N. Northwest Hwy.
Park Ridge, IL 60068
847-823-9308 x200

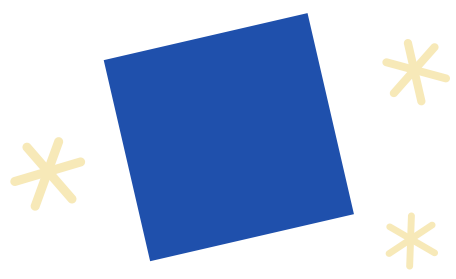
www.standrewspr.org

Daycare: No

Entrance Requirements: Toilet trained, registration fee, enrollment application

Application Date: Open Enrollment

Additional Information: Parents choose day selection with a 2-day minimum for preschool and 3-day for pre-kindergarten. Summer programs, before and after-school care,



Science & Arts Academy

1825 Miner St.
Des Plaines, IL 60016
847-827-7880



www.scienceandartscademy.org

Daycare: No

Entrance Requirements: Toilet trained, parent interview, classroom observation, registration fee, other fees (contact school for details), enrollment application, medical form

Application Date: First round deadline is February 26; rolling admissions thereafter.

Additional Information: Differentiated instruction, extracurricular opportunities, before and after school care, summer program

See Me Grow & Learn

1345 E. Golf Rd.
Des Plaines, IL 60016
847-813-6892



Cost: Weekly rates: Infants \$475, Toddlers \$440, Young Preschool \$415, Preschool/ Pre-K \$380. Some part-time options are also available for toddlers and older. Camps 1st-5th are \$62.50/day.

Daycare: Yes

Entrance Requirements: Parent interview, classroom observation, registration fee, enrollment application, medical form

Application Date: Year Round Enrollment

Additional Information: We accept children 6 weeks - 6 years year round. We also accept children 6 - 12 years of age for summer and school breaks at reduced rate. All meals are prepared on site and included in the cost of tuition.

Sugar Plum Tree Preschool, Inc.

1006 Gillick St.
Park Ridge, IL 60068
847-823-1978



www.sugarplumtree.net

Daycare: Yes

Entrance Requirements: Parent interview, classroom observation, registration fee, other fees (contact school for more details), enrollment application, medical form

Application Date: Open Enrollment

Additional Information: Celebrating 50 years. Special programs include Dad's and Mom's Days, Christmas Sing, and field trips.

Wildwood Nature Center Preschool

529 Forestview
Park Ridge, IL 60068
847-692-3570



www.prparks.org

Daycare: No

Entrance Requirements: Toilet trained, medical form

Application Date: Open Enrollment

Additional Information:

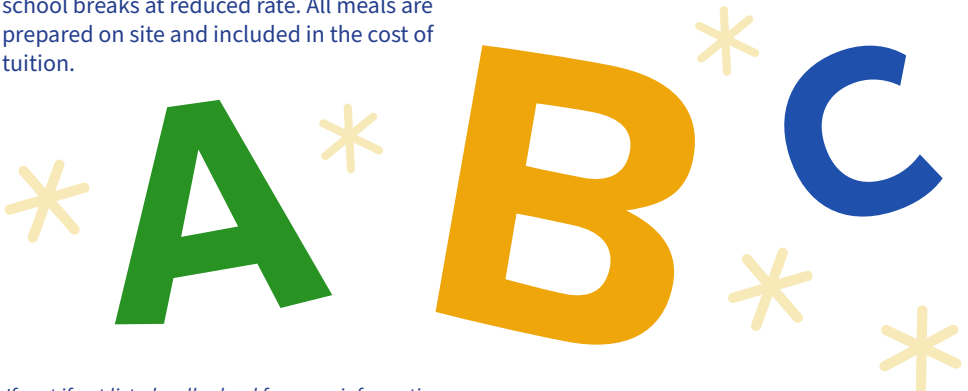
Without Adult: Fall 2025

Nature Preschool (Ages 3 - 4)- M - F a.m., MWF a.m./p.m., TTh a.m./p.m.

Nature Playschool (Ages 3 - 4)- T a.m., Th a.m., F a.m.

Toddler Tree School (Ages 2 - 3)- T/Th a.m.

Full Day options available



Advocate Children's Health Resource Center

1675 Dempster St.
2nd floor
Park Ridge, IL 60068



847-723-CHRC(2472)

www.advocatechildrenshospital.com/chrc

We provide easy access to reliable health information—perfect for parents, teenagers and children. Our website has handouts, eBooks, and online self-registration. Our resource center includes physical books and other materials available for loan. The Children's Health Resource Center is a place for families to get the information they need to make well-informed health care decisions. We can also help families find community resources. Please call ahead for an appointment.

Fees: Our resource center and online resources are free of charge. We sell low-cost bicycle helmets (appointment required) and provide a sibling support group for children who have siblings with disabilities (registration required, sessions are currently free of charge).

A Lot To Say Speech Therapy

524 Devon Park
Park Ridge, IL 60068
224-585-6003



ALotToSaySpeech@gmail.com

www.alottosayspeech.com

A Lot To Say Speech Therapy addresses concerns in the areas of articulation and phonology, receptive and expressive language, language and auditory processing, social language, Autism Spectrum Disorders, fluency, and mild voice disorders. Speech services are available in the office, in your home, using telehealth, or in your child's daycare or pre-school. We will work to determine the best speech therapy situation for your child and your family. Children have "a lot to say" and we want to hear it!

Fees: There is a fee for services. Please contact us for more information. We are in network with BCBS PPO.

AMA Academy of Performing Arts

216 N. Graceland Ave.
2nd Floor
Des Plaines, IL 60016

847-299-2233

www.amaclassess.com

Dance, tumbling and music for ages 10 months - adult, full-day summer camp for ages 5-11

Fees: Tuition, membership dues, performance fees



Assential Therapies, Inc.

422 N. Northwest Hwy.
Suite 210
Park Ridge, IL 60068

847-699-9757 ext. 404

www.infantchildtherapy.com

Infant child developmental specialists; services include pediatric speech therapy, feeding therapy, occupational therapy, and physical therapy.

Fees: Billed to in-network private insurance policies and out of pocket options



Birth to Five Illinois, Cook North Region

413 W. Golf Rd. Suite 55 H & I
Arlington Heights, IL 60005

(Ilinca Wallace)

309-393-2546

(Irene Di Minervino)

309-948-6632

www.birthtofiveil.com/region1bd

www.birthtofiveil.com/

Our mission is to create a statewide regional infrastructure that will amplify input from communities in the development of policies and funding priorities. Our vision is to reimagine a more equitable Early Childhood Education and Care (ECEC) system that respects family and community voice and works to ensure it is centered and prioritized at every level of decision-making in Illinois. Contact us for ways to get involved!

Fees: None



Clearbrook Child and Family Connections



1835 W. Central Rd.
Arlington Heights, IL 60005
847-385-5069

www.clearbrook.org

Early Intervention services for children birth to 3 years old.

Fees: Free evaluation. There may be a family fee and insurance applied for direct services which is discussed with the family first.

Fonseca Martial Arts



432 Touhy Ave.
Park Ridge, IL 60068
847-866-0200

www.fonsecamartialarts.com

Martial Arts Classes

Fees: \$119-\$199 monthly

Forest Preserves of Cook County



536 N. Harlem
River Forest, IL 60305

www.fpdcc.com

People of all ages and interests can relax, get active, or just have fun in the Forest Preserves of Cook County. With thousands of acres to explore and hundreds of events year-round, there are so many ways to get out and experience nature

Fees: The majority of our programs are free.

Friends of the Park Ridge Public Library



prpl1friends@gmail.com

This organization of volunteers provides financial support for special programs and activities in the Library through an annual membership drive, several book sales throughout the year, and the Friends' Book Nook ongoing sale. Join online or get more information at

www.parkridgelibrary.org/join-the-friends/

Yearly membership: \$25, Sponsor: \$50, Life: \$125

Goldfish Swim School



678 N. Northwest Hwy.
Park Ridge, IL 60068
224-479-1414

www.goldfishswimschool.com/park-ridge/

Swim lessons and water safety for ages 4 months to 12 years old

Fees: Starting at \$32 per swim class

Have Dreams



515 Busse Hwy.
Suite 150
Park Ridge, IL 60068

www.havedreams.org

After school social skills programs, mental health counseling for children and families, support groups, trainings, and ASD resources

Fees: Varies on program and service

The Language Academy LLC

100 S. Prospect Ave. Suite #1
Park Ridge, IL 60068
847-796-0061



www.thelanguageacademy-pr.com

Language programs for children

Fees: \$18 per class

Little Blue Crew at Maine East High School

2601 Dempster St.
Park Ridge, IL 60068
847-692-8348



bit.ly/littlebluecrew

Cost: Free

Additional Information:

Our program focuses on fostering a positive self-concept and attitude toward learning, laying a strong foundation for future growth. Designed as a lab-based early childhood program, it emphasizes cognitive, social-emotional, physical, language, and creative development. High school students plan and lead lessons under the guidance of director Mrs. Michelle Meyer, a certified Family & Consumer Sciences instructor with extensive experience in child development. Lessons are reviewed to ensure they are age-appropriate and developmentally aligned

Eligibility Requirements: Age 3 by September 1 of the current school year, Fully toilet trained
Tuition - This program is offered at no cost to families.

Lynnette's School of Dance

517 W. Talcott
Park Ridge, IL 60068
847-823-7334



www.lynnetteschoolofdance.com

Dance classes for ages 3 and up. Premier dance school in Park Ridge for over 50 years.

Fees: Monthly, approximately \$68

Park Ridge Public Library

Staci Greenwald
Youth Services Manager
youthservices@parkridgelibrary.org
20 S. Prospect Ave.
Park Ridge, IL 60068
847-720-3250



www.parkridgelibrary.org

Instagram: @parkridgelibrary

Facebook: Park Ridge Public Library

The Park Ridge Public Library Youth Services Department offers a range of materials and programs for birth through 12th grade along with reading incentive programs year round. Sign your child up for their first library card and get a special treat from the Children's Services Department: parkridgelibrary.org/library-cards/

School of Rock Park Ridge

15 N. Prospect Ave.
Park Ridge, IL 60068
847-939-4207



www.parkridge.schoolofrock.com

Discover a rocking music experience for you or your young ones aged 3 - 17! Dive into our one-of-a-kind music community, where 1:1 lessons are amped up with band collaborations. From guitar to vocals, we've got it all! Dial in for a free tour and unlock the perfect program tailored for you or your child's musical journey. Unleash the melody - call us now for a rhythm-packed adventure!

Fees: Fees are based on the program selected, which range from 3 years to adult. Call for the best fit program and pricing.

We Rock the Spectrum – Franklin Park

10123 Grand Ave.
Franklin Park, IL 60131
773-988-4505



werockthespectrumfranklinpark.com

Play for children of all abilities, we do playdates, toddler time, drop off care, parties, and field trips

Fees: \$16 for open play, siblings receive \$2 discount, monthly memberships available

Wildwood Nature Center

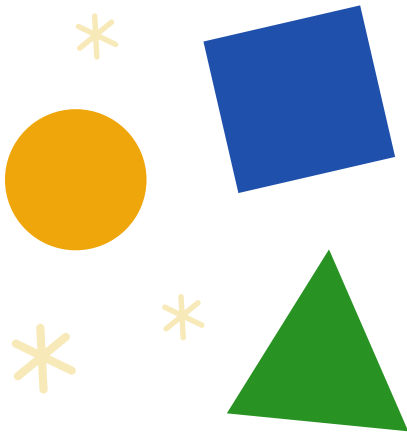
531 Forestview
Park Ridge, IL 60068
847-692-3570



www.prparks.org

Located on more than 5 acres of pond, prairie, woodland, and walking trails. We offer classes for all ages year round, birthday party programs, scout programs, trips, summer camp and a nature-themed playground and animal room. Open to the public and free to visit on Tuesdays, Wednesdays, and Thursdays, 10 a.m. - 6 p.m., and Saturdays 10 a.m. - 4 p.m.

Fees: Fees vary for the programs



NOTES:

Visit us at the Library!

We have in-person **Storytimes** for ages 0 to 5, including a **Bilingual Storytime** for Polish and Spanish languages. Our **Sensory-Friendly Hour** on the first Sunday of every month gives our sensory-sensitive and neurodivergent friends a chance to experience the Library in an adapted and welcoming environment. Our **Calming Space** is always open, as well, as a quiet place to take a break or as a mother's room. Stop in and pick up a **First Friday Fun Kit** or **STEAM kit** to take home, participate in our monthly activity around the department, or just come in and pick up a stack of books.



Scan the QR code to get the latest news and our schedule of programs and events.

••••• Reading Clubs! •••••



Park Ridge Public Library
Winter Reading
December 20, 2024 - February 2, 2025

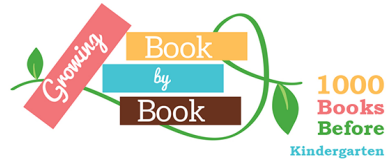
Have you read a lot this winter? Get signed up today and log your reading!

For new and emerging readers!



We Read Together

Read 25 books to earn a patch. Collect 15 patches to earn a prize book!



- Part of the nationwide 1,000 Books Before Kindergarten initiative.
- Read aloud to your little one each day!
- Earn rewards along the way.
- Sign up today and receive a free growth chart and tote bag!

Friends of the Library
Spring BOOK SALE

May 2, 3, and 4

Novels, Children's Books, Cookbooks, History, Art Books, DVDs & CDs, and Vinyl Records





Park Ridge Public Library

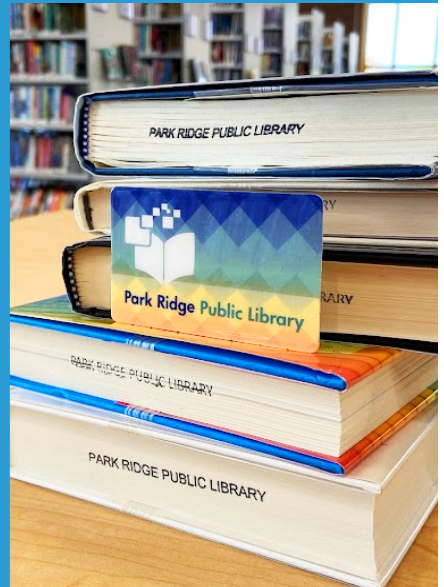
20 S. PROSPECT AVENUE, PARK RIDGE, IL 60068

Need a library card?

Apply here or scan
the QR code to
apply online!



Scan me!



This information is provided for reference purposes only. The Park Ridge Public Library does not endorse or recommend any programs directly.