

Park Ridge Public Library

WHAT'S INSIDE:

- Celebrating our community partnerships
Pages 2 & 3
- Winter Reading begins
December 20



WINTER
2024 - 25

Illustrated by Kerstin Kay

Spotlight on Our Community Partners

The Library is the hub of our community, acting as a collection site for dozens of nonprofit organizations and campaigns and providing space for local groups to gather and work toward their goals. We asked some of our community partners to share how they use the Library to reach supporters and promote their work.

PARK RIDGE GARDEN CLUB

“Bonnie Burnett and I (pictured, right to left) of the Park Ridge Garden Club gave full support to Owen Hanba in his effort to attain the rank of Eagle Scout [through the creation of the Seed Library].

At the Seed Library kickoff event, members manned a display table showing seeded trays and were available for any garden-related questions. The event was a success with the Scouts, Library staff and Garden Club members



along with the general public enjoying a worthwhile, coordinated effort. Libraries are more than books and this event proved to be a well-orchestrated opportunity for all of Park Ridge to gather in support of a remarkable young man and his efforts in scouting.”

Mary Ellen Murphy

Park Ridge Garden Club

The Park Ridge Garden Club was organized on April 5, 1929. They have many events taking place throughout the year including an annual Plant Sale, Garden Walk and the Residential Beautification Awards Contest co-sponsored by the City of Park Ridge.

Find out more about the Garden Club at parkridgegardenclub.org.



Thursdays: December 12,
January 9, February 13 | 1 p.m.



Boost your
cognitive function
and memory while
reconnecting with
your Park Ridge
neighbors.

Registration required

CENTER OF CONCERN

“Since 2022, the Park Ridge Library and the Center of Concern have been working together to run our Wits Workout program. This program was designed as a brain resource tool to provide purposeful opportunities for older adults to engage intellectually and increase socialization. The Center of Concern has been a perfect collaborator on this class because of their commitment to providing services for the older adult



**SUPPORTING FAMILIES.
STRENGTHENING COMMUNITY.**

population. Each month they provide a fun interactive class, and even a nutritional lunch that promotes the health and well-being of older adults who sign up in advance! We're grateful to the 20th Century Club who sponsors this activity, and grateful to the University of Illinois who developed the curriculum we use.”

Jessie Maag

Education & Events Coordinator

Since 1978, the Center of Concern has been a source of hope and inspiration to thousands of clients and volunteers whose lives have been enriched by our programs. We are here to inform, advocate and intervene on behalf of residents struggling with challenges related to aging, homelessness, and accessing resources to remain independent in their homes.

Learn more at centerofconcern.org.

20th CENTURY CLUB OF PARK RIDGE

“The 20th Century Club of Park Ridge is very grateful to the Library for all the wonderful things it does for our city and especially for its support of our senior citizens. So we are pleased to be able to support the Wits Workout program and will continue to do so for as long as we are able. The 20th Century Club is proud to have been able to provide the start-up funds for this worthwhile addition to the community.”

Susan Kosinski

President

Since 1892, the 20th Century Club of Park Ridge philanthropically benefits the community in educational, cultural and civic endeavors while providing camaraderie among its members.

Learn more about their work at pr20cc.org.

Spotlight on Our Community Partners



THE HARBOUR

“As the community outreach worker for the Harbour, I am incredibly grateful for our partnership with Park Ridge Library. Their unwavering support allows us to spread the word about our services as well as host vital community events in a welcoming space, fostering connection and collaboration. Together, we create opportunities for housing in the community, making a meaningful impact on the lives of those we serve.”

Jane Shea Mannard

Community Outreach Worker

The Harbour offers immediate, stable, and safe housing to youth and young mothers experiencing homelessness. We strive to promote safety, stability, and personal growth by providing services and support for long term housing stability, continued education and employment, and individual counseling to help break the cycle of homelessness.

For more information, visit theharbour.org.



Light the Night 2024

GO GREEN PARK RIDGE

“Go Green Park Ridge has been happy to partner with the library on sustainability programming. The Library has hosted both informative displays for us and great speakers on “green” topics. We have participated in Story Hour with composting books and we especially love the quarterly Green Reads book discussions. The library also is a leader in the community by participating in the Collective Resource Compost service and is a We Compost partner at IFSC (Illinois Food Scrap Coalition). We named two Library staff members, *Laura Scott* and *Lauren Bochat*, as our Changemakers this summer because of their work in that area.”

Cindy Grau & Mark Kleinschmidt

Co-Presidents

Go Green Park Ridge is working to make our community more sustainable by advocating for environmental change, informing the community about ways we all can help, and by partnering with others working towards the same goal.

For more information, visit gogreenparkridge.org.

GIVE BACK THIS WINTER AT THE LIBRARY

COZY COMFORTS DRIVE

November 29 - December 23

We will be collecting new hats, scarves, gloves and mittens in the Children's Services department and second floor lobby. New and unworn items only, please.

All donations will be given to families seeking shelter from domestic violence through local WINGS locations.



TOYS FOR TOTS



The Library is partnering with the Park Ridge Police Department to collect new toys for kids in need through Toys for Tots. Leave your donation in the marked bin in our first floor lobby.

YOUTH COMMISSION FOOD DRIVE

The Library's Teen Loft staff partners with the Park Ridge Youth Commission on various community projects, including its annual food drive supporting the Maine Township Food Pantry. The Food Drive will be held in February 2025. The Library serves as a collection site, as do several local businesses. A complete list is available at parkridge.us. The “wish list” from Maine Township will also be posted on our website.



Get a Library card.



Sign up for our programs online!



Films and Book Discussions for Adults

Read four titles of your choice between December 20 and February 2 to earn drawing tickets for a chance to win a gift card to a local business.

Prizes sponsored by the Friends of the Library.

Complete bonus activities for more chances!



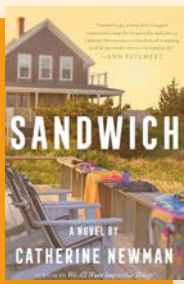
Park Ridge Public Library

Winter Reading

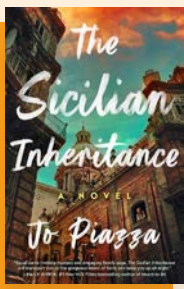
December 20, 2024 - February 2, 2025

Book discussions will be at the Library in the Third Floor Meeting Room OR available live over Zoom. Choose how you would like to join and sign up on our website or by calling 847-720-3280. Books are available two weeks before the discussion at the Reader Services desk.

FICTION GROUP R



Sandwich by Catherine Newman
VIRTUAL: Tuesday, January 14 | 7 p.m.
IN PERSON: Thursday, January 30 | 10 a.m.

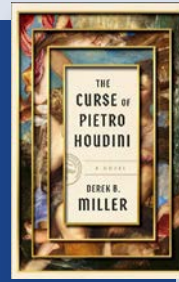


The Sicilian Inheritance by Jo Piazza
VIRTUAL: Tuesday, February 11 | 7 p.m.
IN PERSON: Thursday, February 27 | 10 a.m.

WEDNESDAY EVENING GROUP R



The House in the Cerulean Sea by TJ Klune
 Wednesday, January 15 | 7 p.m.



The Curse of Pietro Houdini by Derek B. Miller
 Wednesday, February 19 | 7 p.m.

NONFICTION GROUP R



Knife by Salman Rushdie
 Friday, February 14 10 a.m.

GREEN READS R



Endangered Eating by Sarah Lohman
 In partnership with Go Green Park Ridge
 Tuesday, January 28 7 p.m.

FILMS - These movies will be screened at the Library in the First Floor Meeting Room. Sponsored by The Friends of the Library.



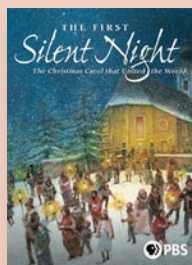
Love Actually D
 [R, 135 min.]
 Tuesday, December 17 1 p.m.*
 *No 6:30 p.m. showing.



Twisters D
 [PG-13, 123 min.]
 Tuesday, January 21 1 p.m. & 6:30 p.m.



Fly Me to the Moon D
 [PG-13, 132 min.]
 Tuesday, February 18 1 p.m. & 6:30 p.m.



The First Silent Night
 Friday, December 20 10 a.m. R



The Queen and the Coup
 Friday, January 17 10 a.m. R



Hidden Volcano Abyss
 Friday, February 21 10 a.m. R

The Studio and Media Lab for Adults



R Orientation

Patrons must complete this mandatory orientation before booking appointments in The Studio.

Open to Park Ridge Library cardholders only. *Limit 3 patrons per session.*

Tuesdays: 6 p.m. | Thursdays: 11 a.m.

THE STUDIO CLASSES

All classes are free and supplies included.

Open to Park Ridge cardholders only. **Must be comfortable using a computer for Laser Cutter classes.**

Registration opens four weeks in advance, if you are unable to attend, please notify the Library at 847-720-3230.

* *Limit of 1 laser cutter class per month.*

Please choose 1 Ornament Kit only.

Limit 1 kit per person.

R Laser Cutter Take & Make Craft (Beginner & Intermediate): Pre-Cut Little Free Library Ornament Kit

To maximize Studio equipment availability this December, we are offering an Ornament Kit! Build, decorate and fill your Little Free Library ornament with miniature books! *Limit 20 kits.* Pick up beginning Monday, December 2.

R Take & Make Craft: Quilted Fabric Ornament

To maximize Studio equipment availability this December, we are offering a Quilted Fabric Ornament Kit for you to take home and assemble.

Limit 20 kits.

Pick up beginning Monday, December 2.

R Laser Cutter 101 (Beginner): Laser Cut Acrylic Pendant Necklace

In this introductory class to the Library's Epilog Laser Cutter, you will create an acrylic pendant necklace!

Limit 1 person per class.

Saturday, January 4 | Nine half-hour slots
9:30 a.m. - 4:30 p.m.

R Silhouette 101

Watch a demo of the Silhouette Studio software. Learn how to find and upload images. *Limit 4 people per class.*

Tuesday, January 7 | 2 p.m.

Thursday, January 16 | 2 p.m.

Tuesday, January 28 | 2 p.m.

R Laser Cutter 201 (Intermediate): Engraved Acrylic LED Light

Laser engrave a decorative acrylic color-changing LED light! *Limit 4 people per class.*

Prerequisite: Laser Cutter 101.

Thursday, January 9 | 7 p.m.

Friday, January 10 | 11 a.m.

Thursday, January 16 | 7 p.m.

R Laser Cutter 101 (Beginner): Pair of Champagne Flutes

Learn how to use the laser cutter's rotary attachment to engrave a pair of stemmed champagne glasses! *Limit 1 person per class.*

Saturday, February 1 | Nine half-hour slots
9:30 a.m. - 4:30 p.m.

R Paper Butterfly Canvas Art

Make a colorful paper butterfly heart canvas for your home or to give as a gift.

Inspired by a Jennifer Maker design.

Limit 4 people per class.

Wednesday, February 5 | 7 p.m.

Thursday, February 13 | 2 p.m.

Thursday, February 20 | 2 p.m.

Tuesday, February 25 | 2 p.m.

R Laser Cutter 201 (Intermediate): Wooden Heart-Shaped Box

Laser cut a wooden heart-shaped box for Valentine gift giving! *Limit 4 people per class.*

Prerequisite: Laser Cutter 101.

Thursday, February 6 | 7 p.m.

Friday, February 7 | 11 a.m.

Wednesday, February 12 | 7 p.m.



R Orientation

Patrons must complete this mandatory orientation before booking appointments in The Media Lab. *Open to Park Ridge Library cardholders only.*

Wednesdays: 7 p.m. | Saturdays: 10 a.m.

THE MEDIA LAB CLASSES

All classes are free. Open to Park Ridge cardholders only. *Limit 3 people per class. Registration opens four weeks in advance.*

R Archiving Your Photos, Slides, and Negatives

Take those boxes of old photos, slides and negatives and digitize them.

Thursdays: December 5, January 9,
February 6 | 7 - 8 p.m.

R Converting Home Videos to Digital

Convert your old VHS home videos to DVD.

Thursdays: December 12, January 16,
February 13 | 7 - 8 p.m.

R Digitizing Audio Cassettes and Records

Convert your old audiocassette recordings and records to MP3 or CD using the TEAC machine.

Thursdays: January 23, February 20
7 - 8 p.m.

R Converting 8mm and Super 8 Home Videos to Digital

Learn the steps to digitize your 8mm and Super 8 film.

Thursdays: December 19, January 30,
February 27 | 7 - 8 p.m.



Scan the QR code to register for programs!



ILLINOIS LIBRARIES PRESENT

These programs will be held over Zoom.

These webinars are made possible by Illinois Libraries Present, a statewide collaboration among public libraries offering premier events. ILP is funded in part by a grant awarded by the Illinois State Library, a Department of the Office for the Secretary of State, using funds provided by the U.S. Institute of Museum and Library Services, under the provisions of the Library Services and Technology Act (LSTA).

R **The Magic of Raina Telgemeier**
Tuesday, December 10
7 p.m.



R **Love and Laughs with Michelle Buteau**
Thursday, January 23
7 p.m.



R **Experience Little Women: The Musical**
Friday - Sunday,
December 20 - 22



R **James McBride**
Tuesday, February 4
7 p.m.



R **Chicago Pizza - Past, Present & Future with Steve Dolinsky**
Thursday, January 9



R **Amy Tan**
Wednesday,
February 19
7 p.m.



R **Tiny Art Show**
Show off your artistic talent in the Park Ridge Public Library Tiny Art Show! Sign up to receive a mini art kit, create your masterpiece at home, and turn it in for display in our second floor display case. *Adults only. While supplies last.*
January 8 - 31

R **Wits Workout**
Using brain puzzles and discussion starters boost your cognitive function and memory while reconnecting with your Park Ridge neighbors. *In-person. Sponsored by the 20th Century Club.*
Thursdays: December 12, January 9, February 13 | 1 p.m.

AFTERNOON PROGRAMS

R **Chair Yoga**
Join Sun and Moon instructor Joan McGee for this gentle yoga class. Stretch, breathe and meditate your way to renewed energy. *Hybrid.*
Wednesdays | 2 p.m.
Joan is on-site December 4 & 18, January 15, February 5 & 19.

R **Smartphone Basics**
Learn the basics of using your smartphone device such as screen navigation, essential functions and applications and more. Bring your own tablet or smartphone device. *In-person. Limit one session per patron.*
Wednesdays: December 18, January 22, February 19 | 11 a.m.

R **A History of Popular Christmas Carols and Songs**
Learn about the music of "the most wonderful time of the year" Barbara Barrett will share the origin stories of popular Christmas carols and songs, from the religious to the outright marketing gimmicks. *Hybrid.*
Tuesday, December 10 | 2 p.m.

R **Park Ridge Library Blood Drive**
During a national blood shortage, join your neighbors to help save lives at this community event. *People aged 17 or older may donate (people aged 16 must have a permission slip). Appointment preferred. In partnership with Versiti Blood Center of Illinois.*
Thursday, December 19 | Noon - 5 p.m.

D **DAR Genealogy Assistance**
Representatives of the 21st Star Chapter of the National Society of the Daughters of the American Revolution (DAR) are available to answer your genealogy questions. *In-person.*

Thursdays: December 19, January 16, February 20 | 9 a.m. - Noon.

R **Family Puzzle Challenge**
Are you an expert jigsaw puzzler? Join our puzzle challenge with the whole family.

See page 10 for more info. Limit 6 teams. Puzzles provided. In-person.

Thursday, December 26 | 2 - 4 p.m.

R **Chicago Architecture: The Latest and Greatest**
Laurie Petersen, editor of the latest edition of *The Architects Guide to Chicago*, shows us dozens of examples of exciting developments all over the city, from stunning new skyscrapers to restored gems in the neighborhoods. *Hybrid.*
Tuesday, January 14 | 2 p.m.

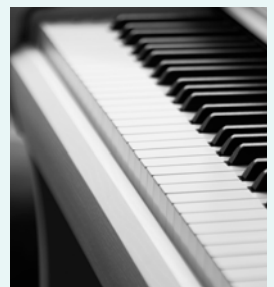


LIVE MUSIC

R **Songs and Stories of the Season**
Join the Silver-Rose flute and guitar duo as they explore the stories behind the songs you've come to know and love during the holidays, performed by flutist Kim Fleuchaus and guitarist Dr. Julie Goldberg. *In-person. New concert series sponsored by the Friends of the Library.*
Thursday, December 5 | 7 p.m.

R **Everything Romantic with Pianist Jeffery Wagner**

Enjoy a concert of romantic music from classical pianist Jeffrey Wagner. Bask in the music of the Romantic Era as well as other compositions that will have you thinking about love. *In-person.*
Tuesday, February 11 | 2 p.m.



GLOBAL NEIGHBORS

R Global Neighbors: China's Lunar New Year
Yvonne Wolf returns to celebrate the Lunar New Year with Chinese food! She will explain the Chinese menu, the intricacies of Chinese dining, and how food is used to welcome the Lunar New Year. *Samples provided. In-person. Sponsored by Marion's Mark.*
Thursday, February 13 | 7 p.m.

EVENING PROGRAMS

R Home Solar Power, EV Charging and Energy Efficiency
Tim Milburn and Go Green Park Ridge will review the basics of installing residential solar panels and EV chargers as well as things you can do to leverage incentives and reduce energy use and costs. *Hybrid.*
Tuesday, December 3 | 7 p.m.

D Stitch Night
Join us for an evening of free crafting advice and lively conversation. Show us what you've been working on or ask a fellow fiber artist how to get started. *In-person. All levels welcome.*
Thursdays: December 5, January 2, February 6 | 7 p.m.

R Park Ridge Writers Group
Do you want to write? Do you need a creative jumpstart to finish a piece? Join the Library's writing group for positive critique and support from other writers. *Limit 20. Hybrid.*
Wednesdays
In-person: December 11, January 8, February 12 | 7 p.m.
Virtual: January 22, February 26 | 7 p.m.

R Crochet 201: Snowman
Lynnanne Pearson returns to help you build on your basic crochet skills with this simple snowman pattern. *Limit 16. Supplies included. Basic crochet skills preferred. In-person. Sponsored by Marion's Mark.*
Thursday, December 12 | 7 p.m.

R The History of Coffee
Join Brian Moskalik, doctor of biology and co-owner of a successful Illinois coffee house, as he walks us through the history of America's favorite morning beverage, including regional differences and insights. *Tasting of three coffees included. Hybrid.*
Tuesday, January 7 | 7 p.m.



R Empower and Excel
Grades 9 - 12 and caregivers
This workshop ensures students with learning or physical differences are fully equipped to unleash their potential in college. *See page 9 for more details.*
Wednesday, January 8 | 7 p.m.

START THE NEW YEAR RIGHT

R KonMari Basics
Join Certified KonMari Consultant Megan Spillman to learn the basics of the KonMari Method and how it can help you escape the vicious cycle of clutter and get organized for the new year. *Hybrid.*
Thursday, January 16 | 7 p.m.

R The Climate Crisis & Mental Health
Therapist Marilee Feldman will outline how our cultural response to the crisis is impacting us, discuss the symptoms of climate anxiety and ecological distress and outline a pathway to climate resilience. *In partnership with the Park Ridge Community Health Commission. Virtual.*
Thursday, January 30 | 7 p.m.

R ChatGPT and Beyond
Still curious about what's happening with artificial intelligence? Mike Gershbein of VerySmartPeople will give us a look at the most discussed AI tech and speculate on the future implications of AI on the workplace and society. *Hybrid.*
Thursday, January 23 | 7 p.m.

R Library Pub Quiz
Do you have a head full of useless facts? Show them off by joining us for Library Pub Quiz. Have a laugh, learn something new and catch up with your library friends! *Held at Harp & Fiddle - 110 Main Street. Limit 30. In-person only.*
Tuesdays: January 28, February 25 6:30 p.m.

R The Life of Bessie Coleman
Gigi Coleman, Bessie's great-niece, will celebrate the legacy of the world's first African American female pilot with history and family stories. *Hybrid.*
Thursday, February 20 | 7 p.m.

YOUR JOB SEARCH

R Ace the Interview and Get the Job Offer!
Lauren Milligan of ResuMayDay will help you crush that job interview with tips on how to prepare, stay focused, and properly follow up afterwards. Be ready for even the toughest scenarios, including behavioral questions. *Virtual.*
Tuesday, February 4 | 7 p.m.

R Resume Workshop
Join Brittany Coleman of Oakton College to polish your resume, making sure it meets current standards that highlight your strengths and accomplishments. *Hybrid.*
Thursday, February 27 | 7 p.m.

D Drop-In Help Desk
Jerry Bransfield of FireLogic will be available to assist you with your tech questions. **This program will now be offered once per quarter.** *In-person.*
Saturday, February 1 | 9 a.m. - Noon

SCORE Small Business Mentoring Sessions

Mentors from SCORE are available to advise small business owners on all aspects of small business. *Free.*
Call the Reference Department at 847-720-3230 to find out how to register.



Scan the QR code to register for programs!

Middle & High School Programs | Grades 6 – 12 *unless otherwise noted.*

MIDDLE & HIGH SCHOOL

Winter Reading

Get cozy with a good book this winter and join Winter Reading! Log your reading each day online at parkridgelib.beanstack.org and start earning rewards! For every 10 days you read, you'll receive a sticker and virtual raffle ticket. Reach 20 days of reading and you'll win a prize book. **Want even more chances to win?** Complete fun activities in the Library to rack up additional virtual raffle tickets. Every ticket you earn will cover a square on a virtual BINGO board—get four in a row or a full board for the ultimate reading victory!

December 20 - February 2

D Homework Hangout

Need extra space to tackle homework? Bring your backpacks and after-school drinks, and join your friends for a productive study session with a side of fun! After you hit the books, unwind with games, activities, and a bit of hanging out. Study, chill and recharge all in one spot! **Wednesdays | 3:30 - 5 p.m.**



R RPG & Board Game Club

Teen gamers, unite! Join an RPG adventure or explore various exciting tabletop games with other passionate players (*no prior experience required*). Check our online calendar for dates. **Select Sundays | 1 - 4:45 p.m.**

Teen Take & Create

Stop by the Loft to pick up a bag of supplies, then take your kit home or work on it in the Library! *Supplies are limited.*

Starting December 9: Moose

Starting December 23: Polar Bears

Starting January 13: Penguins

Starting January 27: Cupcakes

Starting February 10: Whales

Starting February 24: Heart Keychains

5TH - 9TH GRADERS

R Weird and Wacky Soda Taste Test

Grades 5 - 9
Dive into a fizzy adventure! Sip on the strangest sodas—think Pickle Juice Pop and Bacon Soda. Bring your friends and your sense of adventure for a taste experience that's as fun as it is bizarre! *Allergens may be present.*
Friday, December 27 | 3 p.m.

R City Spies Launch Party

Grades 5 - 9
Join us to celebrate the launch of the newest book in the City Spies series: *London Calling!* Enjoy themed activities like trivia games, puzzles and other fun challenges related to the books (*reading not required*).
Friday, February 7 | 4 p.m.



Fill out our Book Match form, and we'll make you a personalized list based on the hottest trends and your unique taste. Get ready to discover your next obsession!

Stop by the Library to get your list and pick up a bag of goodies with your books!

Stay up to date on all things t(w)een at the library in our new monthly e-newsletter just for t(w)eens!



100 BOOKS BEFORE GRADUATION

Ready to conquer 100 Books Before Graduation? Join the challenge and start logging every book you finish and earn awesome prizes for every 25 reads! It's the perfect time to dive in. Are you up for it? **Sign up now at parkridgelib.beanstack.org.**

T(W)EENS IN THE STUDIO

GRADES 6-12

All supplies provided. Events limited to Park Ridge Library cardholders; registration opens one week in advance.

Join us in the Library's makerspace!



Leather Bracelet **R**
Tuesday, December 10 | 4 - 4:45 p.m.



Clay Cactus **R**
Friday, February 21 | 4 - 4:45 p.m.

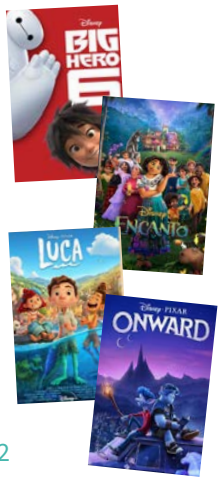
MIDDLE & HIGH SCHOOL

- R Mastering the ACT & SAT**
Grades 9 - 12 and caregivers
 Leveraging over 20 years of test preparation expertise, the Excellerate Learning Studio team is here to help. Learn about the latest changes in the ACT and SAT, how they can impact college admission, how to choose the right test and craft an effective prep strategy to save time, reduce anxiety and boost confidence for test day.
Monday, December 2 | 7 - 8:15 p.m.
- R T(w)een ASL Connections**
Grades 4 - 12
 Dive into American Sign Language in this ongoing series of language lessons. Join us to learn, practice, and connect through ASL. Communicate in a whole new way and make some awesome friends along the journey. *Newcomers welcome.*
Sundays: December 8, February 2 | 3 - 4:30 p.m.
- R Chess Scholars | Grades K - 8**
 Learn chess basics or perfect your skills with Chess Scholars.
Mondays: December 9, January 13 | 4 p.m.
- R The Magic of Raina Telgemeier: Fan Party & Zoom | Grades 4 - 12**
 Fans of Raina Telgemeier, join us to share your smile, talk about her amazing books, doodle, and then meet Raina herself on Zoom! We'll raffle off a copy of one of her books to a lucky participant, and everyone will have a chance to submit a question for her ahead of time. *This is an ILP event; see page 6 for details.*
Tuesday, December 10 | 6:15 - 8:15 p.m.
- R Knitting for Beginners**
Grades 4 and up
See page 11 for more details.
Thursdays: December 12, January 9, February 13 | 4 p.m.



- R Study with the Dogs | Grades 9 - 12**
 Need a study buddy? Come study with a dog from Rainbow Animal Assisted Therapy. They say the best way to prove you've learned something is to explain it to someone else - so come teach a therapy dog all about one of your school subjects! *Registration opens one week before the program.*
Tuesday, December 17 | 15 minute sessions, 6:30 - 7:30 p.m.
- R Family Puzzle Challenge | Families**
 Are you an expert puzzler? Join our jigsaw puzzle challenge with the whole family and see who can complete a 500-piece puzzle first. The winning team gets a prize! *Limit 6 teams. Puzzles provided.*
Thursday, December 26 | 2 - 4 p.m.
- R Murder Mystery Party: A Knight of Murder**
 A knight tournament celebration is planned for the manor of Fernwood, but the celebration takes a turn when someone is murdered! You'll be assigned a character when you arrive, with a backstory and clues. *School-appropriate costumes encouraged. Registration opens two weeks before the event.*
Friday, January 3 | 4 - 5:30 p.m.
- R T(w)een Advisory Board Meet-Up**
 This meeting will be light on planning and heavy on hanging out, catching up, and brainstorming TAB goals for the summer. New and returning members are welcome to attend this informal meeting; the TAB meets May-August to work on formal projects.
Monday, January 6 | 4 p.m.
- R Empower and Excel | Grades 9 - 12 and caregivers**
 This workshop ensures students with learning or physical differences are fully equipped to unleash their potential in college. Families learn to navigate college applications and disability disclosure, transition from high school IEPs/504 plans, learn to self-advocate for accommodations, utilize campus resources and supports, develop essential academic strategies and self-care build confidence, leadership, and responsibility.
Wednesday, January 8 | 7 p.m.

- R Percy Jackson Trivia**
 Are you a Percy Jackson expert? Put your *Percy Jackson and the Olympians* book series knowledge to the test and go wild answering a range of trivia questions about demigods, monsters and Daedalus' labyrinth.
Friday, January 10 | 4 p.m.
- R T(w)een Movie Night: Disney/Pixar**
 Join us for a movie night with snacks! Vote for the animated adventure we'll watch when you register. *Program end time will vary depending on the winner.*
Big Hero 6 (PG, 2014, 102 min.)
Encanto (PG, 2021, 102 min.)
Luca (PG, 2020, 95 min.)
Onward (PG, 2020, 102 min.)
Wednesday, January 22 | 6:30 p.m.
- R Anti-Valentine's Day Party**
 Ditch the romance and join us in NOT celebrating Valentine's Day! We'll make friendship bracelets, anti-love cards, sip heartbreaker punch and listen to breakup songs while reveling in our non-holiday.
Friday, February 14 | 4 p.m.
- R Paws & Play: DIY Pet Toys**
 Unleash your creativity and pamper some pets in this hands-on workshop designed for pet lovers who want to craft fun, safe, eco-friendly and engaging toys. Leave your toys behind to donate to Border Tails Rescue and get an hour of community service time, or take them home for your own furry friends.
Monday, February 17 | 3:30 - 5 p.m.



Scan the QR code to register for programs!

BABY, TODDLER & PRESCHOOL

STORYTIME

Monday	Tuesday	Wednesday	Thursday
D Hello, Baby! <i>Ages 0 - 18 months</i> 9:30 a.m. and 10:30 a.m.	D 2s & 3s Storytime <i>Ages 2 - 3</i> 9:30 a.m.	D 2s & 3s Storytime <i>Ages 2 - 3</i> 9:30 a.m.	D Pre-K Storytime <i>Ages 3 - 5</i> 10 a.m.
	D Busy Bees Story and Playtime <i>Toddlers</i> 10:30 a.m.	D Busy Bees Story and Playtime <i>Toddlers</i> 10:30 a.m.	

Storytimes are held weekly for four-week sessions. Alternative programs will be offered during the weeks of December 23, December 30, February 3. *Caregiver must be present.*

T **Harmonious Horizons Music Class**
Ages 0 - 5 with caregiver
 Tickets available 30 minutes before the program. Limit one session per family per month.
 Fridays: December 6, January 3, February 7
 10 a.m. or 10:45 a.m.

T **Circle Time with the Park District**
Ages 2 - 4 with caregiver
 Join preschool teachers from the Park Ridge Park District for Circle Time at the Library. Then stick around to get more information about the Park District's preschool offerings. *Tickets available 30 minutes before the program.*
 Saturday, December 7 | 10:30 a.m.
 Friday, January 10 | 10:30 a.m.
 Saturday, February 22 | 10:30 a.m.

D **Bilingual Spanish Storytime**
Ages 2 and up with caregiver
 Disfrute de un espacio de cuentos bilingüe con canciones, cuentos y otras actividades. Enjoy storytime in Spanish and English!
 Fridays: December 13, February 14
 10 a.m.

D **Developmental Speech Language Playgroup with Assential Therapies**
Ages 18 months - 3 years with caregiver
 Playtime to promote language development and social skills in a supportive setting.
 Mondays: December 23, February 3
 9:30 a.m.

D **Discovery Hour**
Ages 2 - 6 with caregiver
 Enjoy hands-on early learning fun with your curious kiddos!
 Thursday, December 26 | 10 a.m.

D **Bilingual Polish Storytime**
Ages 2 and up with caregiver
 Ciesz się dwujęzyczną opowieścią z piosenkami, opowieściami i innymi zajęciami. Enjoy storytime in Polish and English!
 Monday, January 13 | 6:30 p.m.

T **Supported Storytime & Craft with Little Steps | Ages 3 - 6 with caregiver**
 Hosted by Little Steps Pediatric Therapy, this program targets age-appropriate fine motor and communication skills. *Tickets available 30 minutes before the program. Siblings welcome.*
 Friday, January 31 | 10 a.m.

D **Tot Time Playdate**
Ages 1 - 5 with caregiver
 Drop in with your toddler to play with toys and connect with friends!
 Tuesday, February 4 | 10 a.m.

R **Adult & Tot Yoga | Ages 3 - 5 with caregiver**
 Wednesday, February 5 | 10 a.m.

T **Move & Groove with Twisted Tree**
Ages 2 and up with caregiver
 Develop coordination and self-expression through movement and music. *Tickets available 30 minutes before the program.*
 Wednesday, February 5 | 10:45 a.m.

T **Explore Winter!**
Ages 3 - 6 with caregiver
 Learn about winter through stories and hands-on STEAM activities! *Tickets available 30 minutes before the program.*
 Thursday, February 6 | 10 a.m.



Scan the QR code to register for programs!

FAMILIES

D **Family Storytime & Craft**
 Saturdays: December 21, January 18, February 1 | 10:30 a.m.

R **Family Puzzle Challenge**
 Are you an expert puzzler? Join our jigsaw puzzle challenge with the whole family and see who can complete a 500-piece puzzle first. The winning team gets a prize! *Limit 6 teams. Puzzles provided.*
 Thursday, December 26 | 2 - 4 p.m.

D **Bluey Playdate: Watch, Play, Create!**
 Drop by and catch an episode of Bluey... or stick around for two, three, or more! We'll also have some fun Bluey related activities as well.
 Friday, December 27 | 10 a.m. - Noon



D **Family Features**
Paddington
 (PG, 2014, 95 min.)
 Thursday, January 2
 10 a.m.
Despicable Me 4
 (PG, 2024, 94 min.)
 Friday, February 28
 10 a.m.



R **Family Yoga Storytime**
Families with kids ages 4 - 7
Saturday, January 11 | 10 a.m.

D **Virtual PJ Storytime**
This Storytime takes place on Zoom.
Wednesdays: January 29, February 26
7 p.m.

T **The Big Balloon Show with Smarty Pants | Families with kids ages 4 and up**
Prepare to be amazed and entertained by this one-of-a-kind show featuring magic, all ages comedy, interactive storytelling and of course, Smarty's award-winning, larger than life balloon props. *Tickets will be available at the Children's Services desk starting Saturday, February 8.*
Saturday, February 15 | 10 a.m.

SCHOOL AGE

R **T(w)een ASL Connections**
Grades 4 - 12
Dive into American Sign Language in this ongoing series of language lessons. Join us to learn, practice, and connect through ASL. Communicate in a whole new way and make some awesome friends along the journey.
Newcomers welcome.
Sundays: December 8, February 2
3 - 4:30 p.m.

R **Chess Scholars | Grades K - 8**
Learn chess basics or perfect your skills with Chess Scholars.
Mondays: December 9, January 13
4 p.m.

R **The Magic of Raina Telgemeier: Fan Party & Zoom | Grades 4 - 12**
Fans of Raina Telgemeier, join us to share your smile! *See page 9 for more details. This is an ILP event; see page 6 for details.*
Tuesday, December 10 | 6:15 - 8:15 p.m.

R **Knitting for Beginners**
Grades 4 and up
Learn how to cast on, knit, purl and bind off in this beginning knitting class. *All materials provided, no prior experience necessary.*
Thursdays: December 12, January 9, February 13 | 4 p.m.

R **Oodles of Doodles | Grades K - 2**
Enjoy a story followed by an art project inspired by our book.
Monday, December 16 | 4 p.m.

R **Read to the Dogs | Grades 1 - 6**
Reserve your space to read to a dog from Rainbow Animal Assisted Therapy. *This program is generously made possible by Marion's Mark. Registration opens one week in advance at 6:30 p.m.*
Wednesdays: December 18, January 15, February 19 | 15-minute sessions
6:30 - 7:30 p.m.

D **STEAMagination | Grades 1 and up**
with caregiver
Explore our hands-on STEAM activities alongside your kids!
Fridays: December 20, January 17, February 21 | 4 p.m.

D **LEGOmania | Grades K and up**
What can you create with our LEGO bricks?
Monday, December 23 | 4 p.m.



Winter Reading

Get rewarded for reading this winter!
Every 10 days of reading earns you a ticket for a chance to win gift cards or your own plush Yeti. Log 20 days of reading to earn a prize book. Log 40 days to take a crack at our winter game for an additional whimsical treat!
December 20 - February 2



I SPY: WINTER!

December 1 - January 31
Join us in December and January to see what you can spy hiding in the Children's Department!



FEATURED EVENTS

Cozy Comforts Drive
We will be collecting new hats, scarves, gloves and mittens in the Children's Service department and the second floor lobby. *All donations will be given to families seeking shelter from domestic violence through local WINGS locations.*
New, unworn items only, please.
November 29 - December 23

Sensory-Friendly Hour **D**
We will open an hour early for an adapted, sensory-friendly Library experience for all. *The Children's Department environment will be adjusted. Sensory supports and activities available.*
Sundays: December 1, January 5, February 2 | 11 a.m. - Noon

Noon Year's Eve Party **D** **T**
Get a head start on ringing in 2025 at our Noon Year's Eve Party! Drop in to the Children's Department for activities and crafts. Then we'll move down to the big program room for a balloon drop countdown at NOON! *Tickets required for balloon drop, available at the Children's Services desk starting 9 a.m. on Monday, December 30*
Monday, December 30 | 10:30 a.m. - Noon

Preschool & Enrichment Fair **D**
We're back! Join us at the Library to learn about many of the daycare, preschool, and enrichment facilities in the area. Representatives will be available to answer your questions and help you find the right fit for your family.
Saturday, January 25 | 10 a.m. - Noon

SAVE THE DATE!

Flannel Board Fun **R**
Teachers and Caregivers
Keep an eye out for this favorite teacher program coming in March!
Monday, March 10 | 6 - 8 p.m.

PRETEND PLAY ZONE:

CAFÉ
February 1 - 28
The Pretend Play Zone returns in February! Stop by to serve up some delicious imaginary delights.



5th GRADERS!

Check out page 8 for more programs you're invited to!





Patron Services & Operator 847-825-3123
 Children's Services 847-720-3250
 Reference & Nonfiction 847-720-3230
 Reader Services 847-720-3280
 Teen Loft 847-720-3286

Library Hours

Monday – Thursday: 9 a.m. to 9 p.m.
 Friday: 9 a.m. to 6 p.m.
 Saturday: 9 a.m. to 5 p.m.
 Sunday: Noon to 5 p.m.

Library Trustees

Deepika Thiagarajan, President
 Theresa Renaldi, Vice President
 Gregg Rusk, Treasurer
 Anita DeFrank, Secretary
 Michael Donahue
 Alexandra Hanba
 Joshua Kiem
 Danielle Powers
 David Somheil

Library Director – Joanna Bertucci
 librarydirector@parkridgelibrary.org

Marketing Manager – Jennifer Healy

Graphic Designer – Kerstin Henke

Follow us on social media!



ECRWSS

Postal Customer
Park Ridge, IL 60068

NON-PROFIT
 U.S. POSTAGE
PAID
 PARK RIDGE, IL
 PERMIT NO. 63