



# ezLaminator®

## User Guide

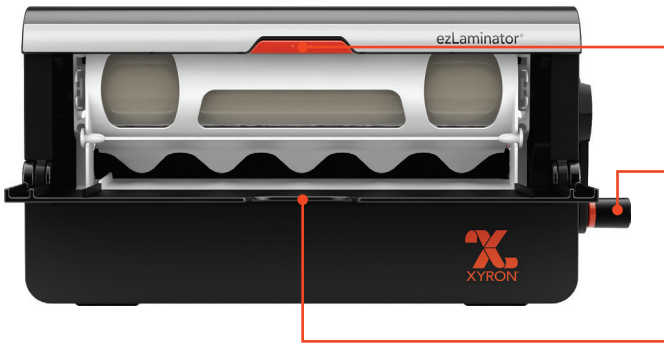


## No Heat. No odor. No Waiting!

The Xyron® ezLaminator® is perfect for your office, school and home laminating needs. The patented easy-loading cartridge offers you the flexibility and quality you expect from Xyron; without heat or electricity there is no warm up time. Effortlessly apply lamination to your document or projects. Cold lamination will never peel allowing you to cut to the edge or leave a border.

Our new design offers you the ability to use either 5" or 9" Refill Cartridges. The possibility of using 2 refill sizes allows you to efficiently use your refills without waste.

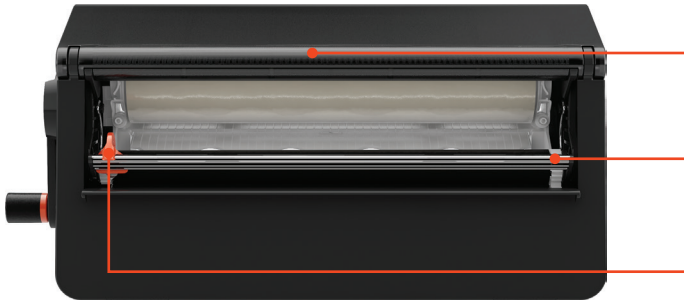
# Getting to know your Xyron ezLaminator®



**Button:**  
Opens cartridge compartment.

**Handle:**  
Advances items through the machine. Turn clockwise.

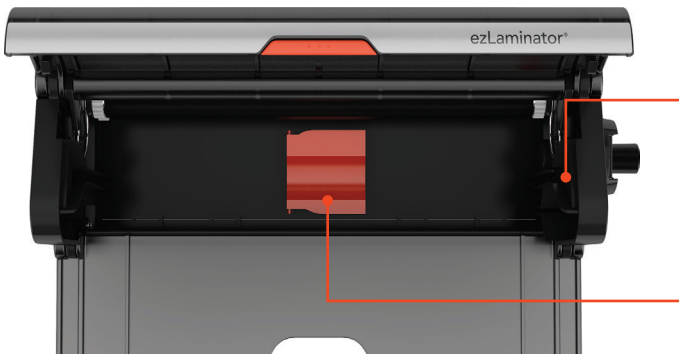
**Feed Tray:**  
Use with the alignment guides printed on the tray to feed items into the machine.



**Carry Handle:**  
Grip this area to carry your machine.

**Cut Bar:**  
Holds finished materials in place.

**Cut Blade:**  
Slides to cut finished material after it exits the machine.



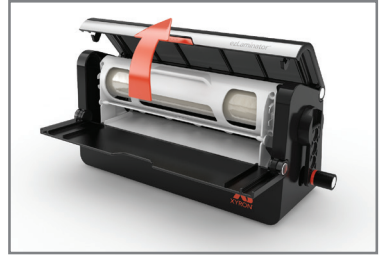
**Cartridge Track:**  
When installing refill cartridges, the track guides the drop-in cartridges into place.

**5" Adapter:**  
Flips up to utilize Xyron® 5" cartridges.

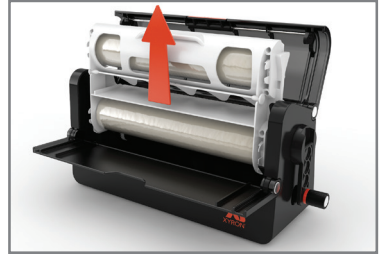
# Loading and Unloading 9" Cartridges

---

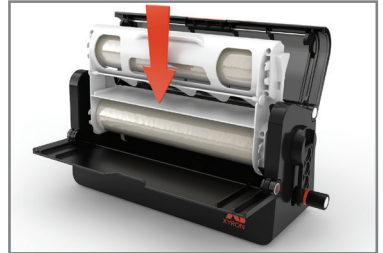
Open cartridge compartment by pushing button and lifting the lid.



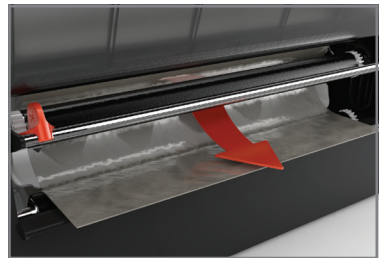
Pull cartridge up and out of the machine.



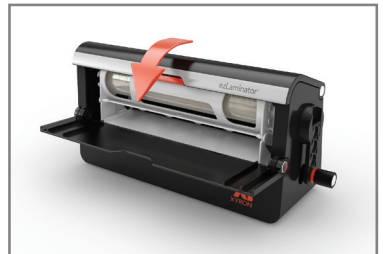
To replace, ensure the label on the refill cartridge is facing you, drop the cartridge into the machine using the track as a guide.



Place material flap between the 2 black rollers.



Close the lid by pressing down until it clicks.

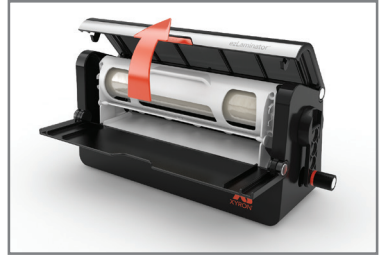


\* Your ezLaminator comes pre-loaded with a Two-Sided Laminate Refill Cartridge.

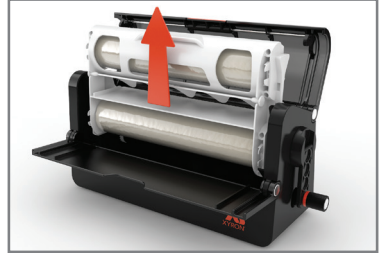
# Loading and Unloading 5" Cartridges

---

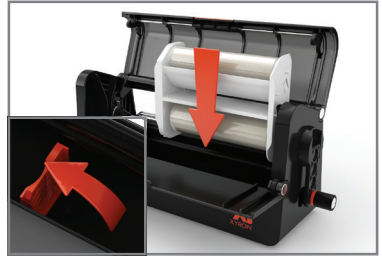
Open cartridge compartment by pushing button and lifting the lid.



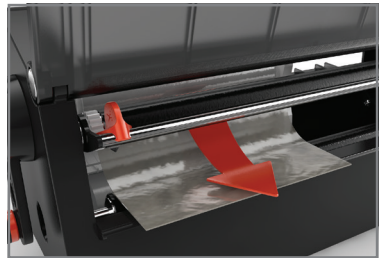
Pull cartridge up and out of the machine.



To replace, flip up the 5" adapter in the bottom center of the machine. Ensure the label on the refill cartridge is facing you, drop the cartridge into the machine using the track as a guide.



Place material flap between the 2 black rollers.



Close the lid by pressing down until it clicks.



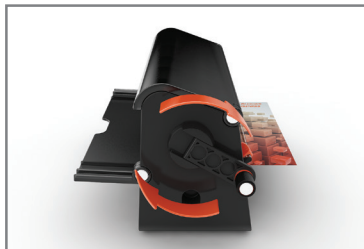
## Using the ezLaminator® with a 9" Cartridge

---

Place item on the feed tray.  
Align **left**.



Gently guide the item forward  
through the back of the machine  
while turning the handle clockwise.



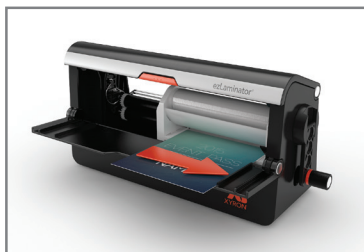
Cut finished product by pressing  
down and sliding the cut blade  
across the cut bar.



## Using the ezLaminator® with a 5" Cartridge

---

Place item on the feed tray.  
Align **right**.



# Helpful Tips

---

## General Tips:

- For best results, turn handle slowly.
- Use items that are 1/8" thick or less.
- Store your machine and cartridges in a cool, dry place.

## Two Sided Laminate and Magnet:

- When using laminate, before inserting your item, test a few inches to ensure no wrinkles are present.
- If a wrinkle occurs in the laminate film, fold a small piece of paper a 2-3 times and run it through the machine separately until you see the laminate smooth out.
- Not recommended for one-of-a-kind items.
- Xyron® laminates are adhesive based, so they will not peel or separate. You can cut close to edge or into document itself.

# Customer Service

---

We want you to be happy with your purchase of the Xyron ezLaminator®. Should you have questions or concerns please contact Esselte® Customer Service at 1-800-793-3523. You may email us at [customerserviceus@esselte.com](mailto:customerserviceus@esselte.com). Register your product online at [www.xyron.com](http://www.xyron.com). Go to the bottom of the page to "Support" and select "Product Registration".

Esselte Corporation warrants tools and associated components are free from defects in material and workmanship for a period of one (1) year from the date of purchase. Esselte Corporation will repair or replace (at Esselte's discretion) a defective product or part without charge, with proof of purchase. If it is determined that the product is damaged by neglect or misuse, the warranty is null and void.

\* If you purchase this product outside the United States, Esselte Corporation will warrant this product in accordance with the country's law where purchased.

6910\_RevA

[www.xyron.com](http://www.xyron.com)



©2015 Xyron, Inc.  
Scottsdale, AZ 85258  
USA