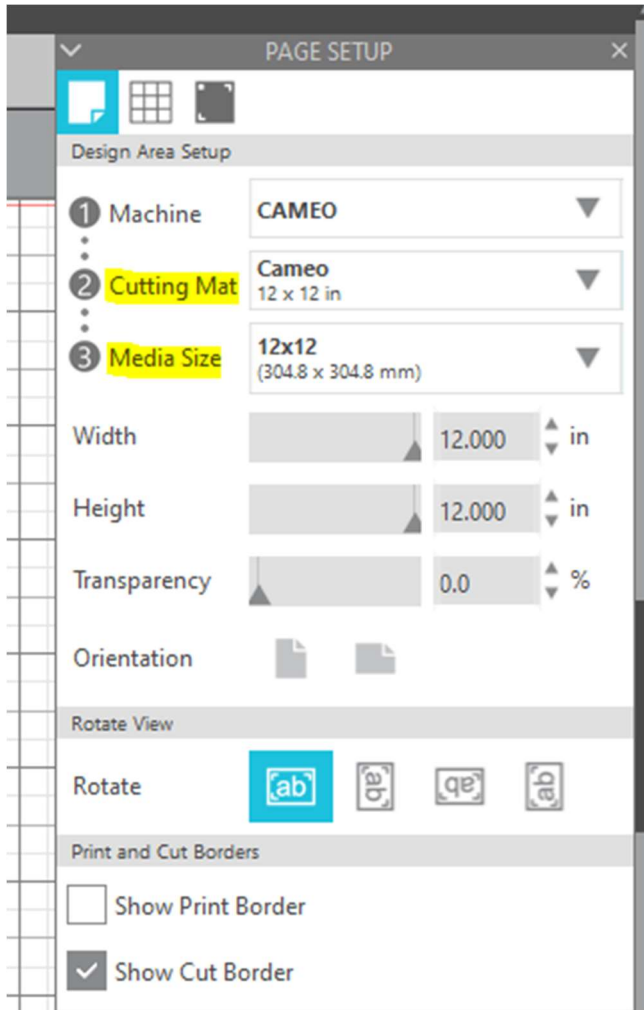
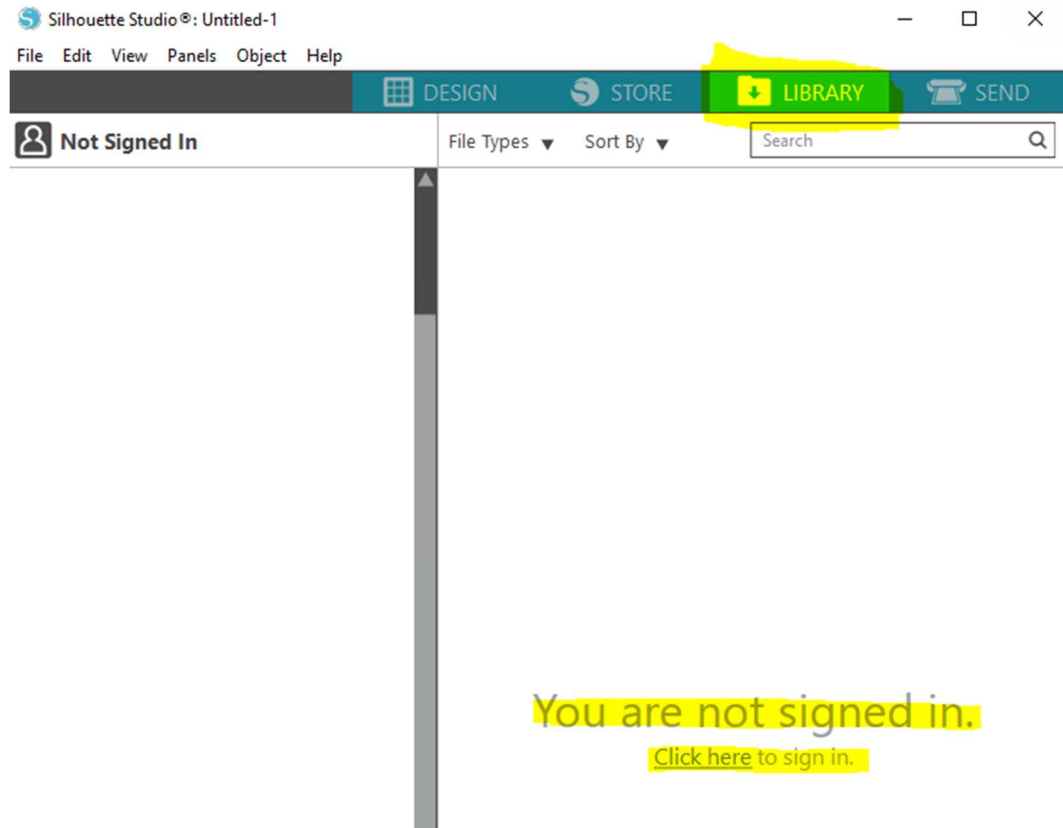


## Silhouette 101

1. Turn on the Silhouette Cameo (power button on the side)
2. Open Silhouette Studio on your computer, and either begin a new design, or open one from your library. Make sure to set the mat and material sizes to what you will be cutting.



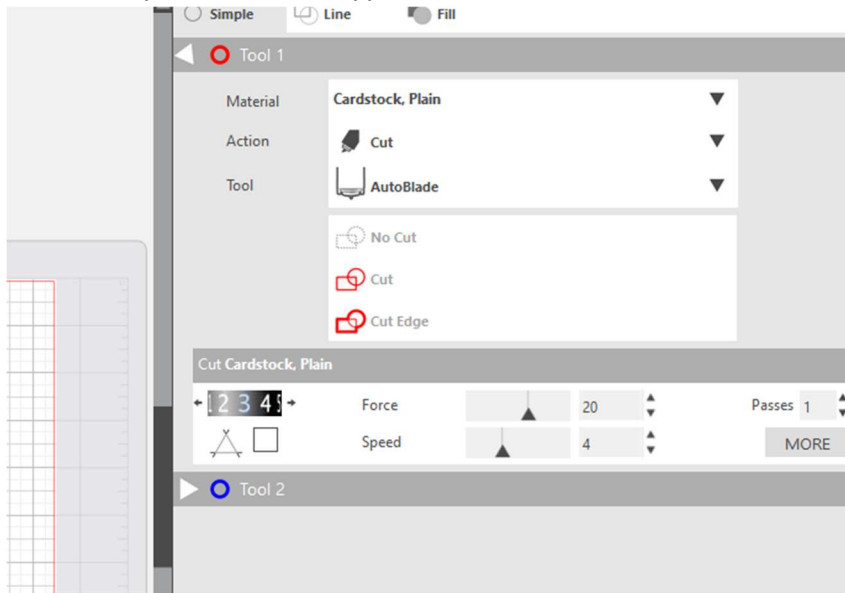
- a. To open a design from your library, click the Library tab, and select the project you want to work on. You will need to log into your Silhouette account, or create a new one.



- b. If you are importing a PNG or JPG file, you will need to use the Trace function to create cut lines. See the "How to Trace an Image" handout.



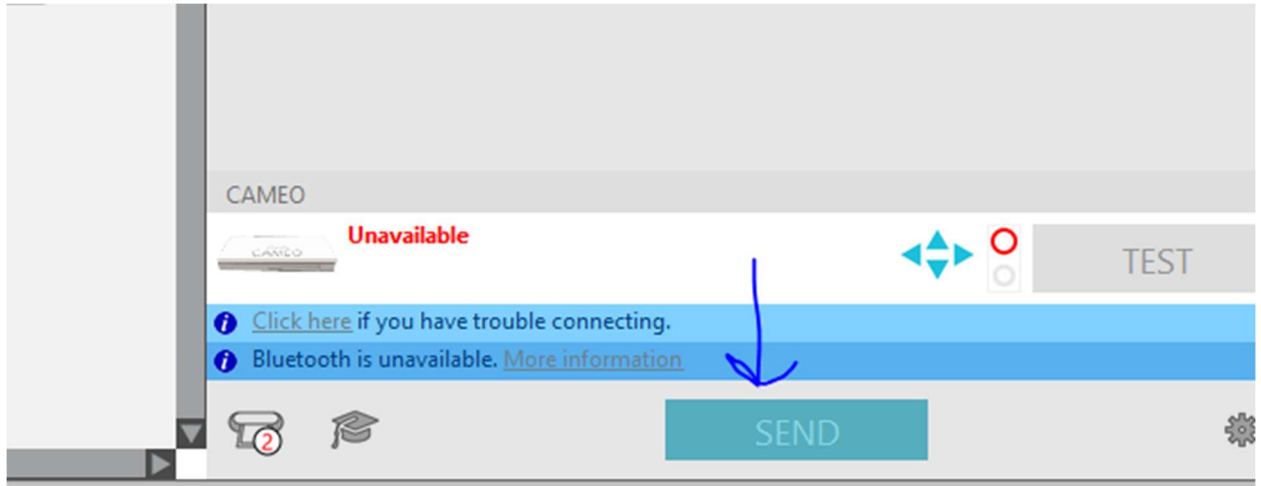
- Once you have completed your design, click the Send Tab, and adjust the settings to match your material type.



- Attach your material to the mat, and load it into the machine by lining up the mat with the edge guides and pressing "Load" on the small LCD screen.



5. Make sure the Silhouette is connected to the computer via USB, and click “Send”. If you are using heat transfer vinyl, make sure to select “Send Mirrored” when prompted.



6. Once your project is finished cutting, press Unload on the machine and remove from the mat.